



**ISO/IEC 17025
CERTIFIED REFERENCE TOOLS
FOR HARDNESS TESTERS**

CATALOGUE
2024

**HARDNESS
REFERENCE BLOCKS
& INDENTERS**



INTRODUCTION

UPI Laboratories Europe BV, ISO/IEC 17025 RvA accredited laboratory providing DIN EN ISO / ASTM dual certified test blocks and indenters.

The RvA, like UKAS, Dakks, COFRAC, NVLAP, A2LA are ILAC (International Laboratory Accreditation Cooperation) members. Certificates issued by UPI Laboratories for test blocks and indenters meet or exceed the relevant ISO/ASTM requirements for hardness testing and comply with the requirements for NADCAP accredited/certified organizations.

Hardness test blocks or hardness reference plates are comparison plates most commonly made of Steel or Aluminum but could also be made of Brass or custom materials. They are used for the day to day Indirect Verification and Calibration of hardness testing machines and instruments. There are hardness test blocks for almost all hardness testing methods and scales.

Verifying the display reading of a hardness tester against ISO/ASTM certified hardness test block values part of a normal quality assurance process. Adjusting your hardness tester according to the value engraved in a hardness test block, as long as the adjustments are minor, can be done after assurance that a correct and undamaged indenter/penetrator is installed and the tester operates normally. Indenters are available for almost all scales with viability of micro and macro diamond indenters and carbide or available in the different sizes by the different methods.

ISO & ASTM HARDNESS TEST BLOCKS and INDENTERS (RvA)

Hardness test blocks UPI Laboratories Europe BV branded are manufactured according to standards ISO (International) and ASTM (American).

Such standards apply to the physical requirements as well to the method & the way the final value is found and confirmed." UPI Laboratories BV hardness test blocks and indenters are of excellent finish and have very low variation, excellent repeatability.

RAW MATERIALS USED

In order to manufacture good hardness test blocks, strict control over the quality of raw materials (Steel, Brass, Aluminum) is required. The entire block material needs to be homogenous, to assure low spread of readings and excellent repeatability. UPI Laboratories Europe BV performs supplier audits to assure this.

HEAT TREATMENT

Distribution of the blocks in the hardening furnaces is of utmost importance, time, temperature and quench are all carefully controlled processes, to assure a top class product. UPI Laboratories Europe BV performs supplier audits to assure this.

FINISHING

The next step in the process to ensure high quality 'blanks' is the grinding, polishing and lapping of the block surfaces. Any concerns on the surface quality are eliminated due to thorough selection after inspection. UPI Laboratories Europe BV performs supplier audits to assure this.

QUALITY CONTROL

Before proceeding with the ultimate verification and engraving of the block hardness, blocks are undergoing a full inspection to ensure that they meet the physical requirements of ISO and ASTM (thickness, flatness, parallelism, surface roughness, magnetism and uniformity).

© UPI Laboratories Europe BV

Changes in products and/or product specifications can emerge due to new technologies and/or continuous development.

We reserve the right to change or modify specifications of products without prior notice.

We recommend you to contact our sales office for up-to-date information.

© All rights reserved
C24CATPRI/02/EN


UPI
LABORATORIES

TRACEABILITY

UPI hardness calibration blocks and indenters are calibrated & DUAL-certified by UPI Laboratories traceable to National/International standards according to ISO 6506, ISO 6507, ISO 6508, ISO 4545, ASTM E18, ASTM E92 and ASTM E10.

www.rva.nl/alle-geaccrediteerden/k182



TEST BLOCKS

ROCKWELL REFERENCE BLOCKS

ROCKWELL DIAMOND SCALES

UPI Rockwell cone hardness calibration blocks are calibrated & DUAL-certified by UPI Laboratories traceable to National/International standards according to ISO 6508/3 & ASTM-E18 A4.

ROCKWELL CARBIDE BALL SCALES

UPI Rockwell ball hardness calibration blocks are calibrated & DUAL-certified by UPI Laboratories traceable to National/International standards according to ISO 6508/3 & ASTM-E18 A4.



ROUND (dia. 60mm X 10mm thickness)
All mentioned hardness values are nominal, the actual calibrated values may vary.

| NAV ID | DESCRIPTION | | | | | | | | | | | |
|----------|-------------|----|----|----|----|----|----|----|----|----|----|----|
| HRC | 20 | 25 | 30 | 35 | 40 | 45 | 50 | 55 | 60 | 63 | 65 | 67 |
| HRA Soft | 22 | 26 | 31 | 35 | 40 | 45 | 47 | 50 | 53 | 55 | 59 | 62 |
| HRA Hard | 60 | 63 | 65 | 68 | 70 | 73 | 76 | 78 | 81 | 83 | 84 | 85 |
| HRD | | 44 | 48 | 51 | 55 | 59 | 63 | 67 | 71 | 75 | | |
| HR15N | | | 71 | 74 | 76 | 79 | 82 | 85 | 88 | 90 | 92 | |
| HR30N | | | 46 | 50 | 55 | 59 | 64 | 68 | 72 | 77 | 81 | |
| HR45N | | | 25 | 31 | 37 | 43 | 49 | 55 | 60 | 66 | 72 | |

Deviating scales or hardness can be ordered by custom request.
Blocks can be supplied with NADCAP compliant grid.

ROUND (dia. 60mm X 10mm thickness)
All mentioned hardness values are nominal, the actual calibrated values may vary.

| NAV ID | DESCRIPTION | | | | | | | | | | | | |
|-------------|-------------|-----|-----|-----|----|----|-----|----|----|----|----|----|----|
| HRB | 10 | 20 | 30 | 40 | 50 | 60 | 65 | 70 | 75 | 80 | 85 | 90 | 95 |
| HRE (alu) | | | 75 | 81 | 87 | 93 | 100 | | | | | | |
| HRF (alu)** | | | 74 | 80 | 86 | 91 | 97 | | | | | | |
| HRM* | | 85 | 110 | | | | | | | | | | |
| HRR* | | 105 | | 125 | | | | | | | | | |
| HR15T | | | 70 | 73 | 77 | 80 | 83 | 85 | 86 | 88 | 90 | 91 | |
| HR30T | | | 36 | 43 | 49 | 56 | 63 | 66 | 69 | 73 | 76 | 80 | |
| HR45T | | | 12 | 22 | 32 | 43 | 48 | 53 | 58 | 63 | 68 | | |

Deviating scales or hardness can be ordered by custom request.
Blocks can be supplied with NADCAP compliant grid.

* The scales of the 1/4" and 1/2" ball indenter are only ASTM E18, not ISO 6508.
** Scales are outside the scope of accreditation.

TEST BLOCKS RANGE



MACRO VICKERS SCALES

UPI Macro Vickers hardness calibration blocks are calibrated & DUAL-certified by UPI Laboratories traceable to National/International standards according to ISO 6507/3 & ASTM-E92 A4.



Standard high grade polishing

| ROUND (dia. 60mm X 10mm thickness) | | | | | | | | | | | | | | | | | |
|---|-------------|-----|-----|-----|-----|-----|-----|-----|-----|-----|------|------|------|------|------|------|------|
| All mentioned hardness values are nominal, the actual calibrated values may vary. | | | | | | | | | | | | | | | | | |
| NAV ID | DESCRIPTION | | | | | | | | | | | | | | | | |
| HV0.1 | 40 | 70 | 100 | 150 | 200 | 250 | 300 | 350 | 400 | 450 | 500* | 550* | 600* | 650* | 700* | 750* | 800* |
| HV0.2 | 40 | 70 | 100 | 150 | 200 | 250 | 300 | 350 | 400 | 450 | 500 | 550 | 600 | 650 | 700 | 750 | 800 |
| HV0.3 | 40 | 70 | 100 | 150 | 200 | 250 | 300 | 350 | 400 | 450 | 500 | 550 | 600 | 650 | 700 | 750 | 800 |
| HV0.5 | 40 | 70 | 100 | 150 | 200 | 250 | 300 | 350 | 400 | 450 | 500 | 550 | 600 | 650 | 700 | 750 | 800 |
| HV1 | 40 | 70 | 100 | 150 | 200 | 250 | 300 | 350 | 400 | 450 | 500 | 550 | 600 | 650 | 700 | 750 | 800 |
| HV2 | 40 | 70 | 100 | 150 | 200 | 250 | 300 | 350 | 400 | 450 | 500 | 550 | 600 | 650 | 700 | 750 | 800 |
| HV3 | 40 | 70 | 100 | 150 | 200 | 250 | 300 | 350 | 400 | 450 | 500 | 550 | 600 | 650 | 700 | 750 | 800 |
| HV5 | 40 | 70 | 100 | 150 | 200 | 250 | 300 | 350 | 400 | 450 | 500 | 550 | 600 | 650 | 700 | 750 | 800 |
| HV10 | 40 | 70 | 100 | 150 | 200 | 250 | 300 | 350 | 400 | 450 | 500 | 550 | 600 | 650 | 700 | 750 | 800 |
| HV20 | 40 | 70 | 100 | 150 | 200 | 250 | 300 | 350 | 400 | 450 | 500 | 550 | 600 | 650 | 700 | 750 | 800 |
| HV30 | 40 | 70 | 100 | 150 | 200 | 250 | 300 | 350 | 400 | 450 | 500 | 550 | 600 | 650 | 700 | 750 | 800 |
| HV50 | 40* | 70 | 100 | 150 | 200 | 250 | 300 | 350 | 400 | 450 | 500 | 550 | 600 | 650 | 700 | 750 | 800 |
| HV100 | 40* | 70* | 100 | 150 | 200 | 250 | 300 | 350 | 400 | 450 | 500 | 550 | 600 | 650 | 700 | 750 | 800 |

* Hardness value is outside the scope of the ISO/ASTM standards due to indentations smaller than 0,020mm. Deviating scales or hardness can be ordered on custom request.



MICRO VICKERS SCALES

UPI Micro Vickers hardness calibration blocks are calibrated & DUAL-certified by UPI Laboratories traceable to National/International standards according to ISO 6507/3 & ASTM-E92 A4.



Extreme mirror polishing

| ROUND (dia. 25mm X 6mm thickness) | | | | | | | | | | | | | | | | | |
|---|-------------|-----|------|------|------|------|------|------|------|------|------|------|------|------|------|------|------|
| All mentioned hardness values are nominal, the actual calibrated values may vary. | | | | | | | | | | | | | | | | | |
| NAV ID | DESCRIPTION | | | | | | | | | | | | | | | | |
| HMV2 | 40 | 70 | 100 | 150 | 200 | 250 | 300 | 350 | 400 | 450 | 500 | 550 | 600 | 650 | 700 | 750 | 800 |
| HMV1 | 40 | 70 | 100 | 150 | 200 | 250 | 300 | 350 | 400 | 450 | 500 | 550 | 600 | 650 | 700 | 750 | 800 |
| HMV0.5 | 40 | 70 | 100 | 150 | 200 | 250 | 300 | 350 | 400 | 450 | 500 | 550 | 600 | 650 | 700 | 750 | 800 |
| HMV0.3 | 40 | 70 | 100 | 150 | 200 | 250 | 300 | 350 | 400 | 450 | 500 | 550 | 600 | 650 | 700 | 750 | 800 |
| HMV0.2 | 40 | 70 | 100 | 150 | 200 | 250 | 300 | 350 | 400 | 450 | 500 | 550 | 600 | 650 | 700 | 750 | 800 |
| HMV0.1 | 40 | 70 | 100 | 150 | 200 | 250 | 300 | 350 | 400 | 450 | 500* | 550* | 600* | 650* | 700* | 750* | 800* |
| HMV0.05 | 40 | 70 | 100 | 150 | 200 | 250* | 300* | 350* | 400* | 450* | 500* | 550* | 600* | 650* | 700* | 750* | 800* |
| HMV0.025 | 40 | 70 | 100 | 150* | 200* | 250* | 300* | 350* | 400* | 450* | 500* | 550* | 600* | 650* | 700* | 750* | 800* |
| HMV0.02 | 40 | 70 | 100* | 150* | 200* | 250* | 300* | 350* | 400* | 450* | 500* | 550* | 600* | 650* | 700* | 750* | 800* |
| HMV0.015 | 40 | 70 | 100* | 150* | 200* | 250* | 300* | 350* | 400* | 450* | 500* | 550* | 600* | 650* | 700* | 750* | 800* |
| HMV0.010 | 40 | 70* | 100* | 150* | 200* | 250* | 300* | 350* | 400* | 450* | 500* | 550* | 600* | 650* | 700* | 750* | 800* |

* Hardness value is outside the scope of the ISO/ASTM standards due to indentations smaller than 0,020mm. Deviating scales or hardness can be ordered on custom request.



KNOOP SCALES

UPI Knoop hardness calibration blocks are calibrated & DUAL-certified by UPI Laboratories traceable to National/International standards according to ISO 4545/3 & ASTM-E92 A4.



ROUND (dia. 25mm X 6mm thickness)

All mentioned hardness values are nominal, the actual calibrated values may vary.

| NAV ID | DESCRIPTION | | | | | | | | | | | | | | | | |
|-----------|-------------|------|-------|-------|-------|-------|-------|-------|-------|-------|-------|-------|-------|-------|-------|-------|-------|
| HK0.01** | 40** | 70** | 100** | 150** | 200** | 250** | 300** | 350** | 400* | 450* | 500* | 550* | 600* | 650* | 700* | 750* | 800* |
| HK0.015** | 40** | 70** | 100** | 150** | 200** | 250** | 300** | 350** | 400** | 450** | 500** | 550* | 600* | 650* | 700* | 750* | 800* |
| HK0.02** | 40** | 70** | 100** | 150** | 200** | 250** | 300** | 350** | 400** | 450** | 500** | 550** | 600** | 650** | 700** | 750* | 800* |
| HK0.025** | 40** | 70** | 100** | 150** | 200** | 250** | 300** | 350** | 400** | 450** | 500** | 550** | 600** | 650** | 700** | 750** | 800** |
| HK0.05** | 40** | 70** | 100** | 150** | 200** | 250** | 300** | 350** | 400** | 450** | 500** | 550** | 600** | 650** | 700** | 750** | 800** |
| HK0.1 | 40** | 70 | 100 | 150 | 200 | 250 | 300 | 350 | 400 | 450 | 500 | 550 | 600 | 650 | 700 | 750 | 800 |
| HK0.2 | 40** | 70** | 100 | 150 | 200 | 250 | 300 | 350 | 400 | 450 | 500 | 550 | 600 | 650 | 700 | 750 | 800 |
| HK0.3 | 40** | 70** | 100** | 150 | 200 | 250 | 300 | 350 | 400 | 450 | 500 | 550 | 600 | 650 | 700 | 750 | 800 |
| HK0.5 | 40** | 70** | 100** | 150** | 200 | 250 | 300 | 350 | 400 | 450 | 500 | 550 | 600 | 650 | 700 | 750 | 800 |
| HK1 | 40** | 70** | 100** | 150** | 200** | 250** | 300** | 350 | 400 | 450 | 500 | 550 | 600 | 650 | 700 | 750 | 800 |
| HK2 | 40** | 70** | 100** | 150** | 200** | 250** | 300** | 350** | 400** | 450** | 500** | 550** | 600** | 650** | 700** | 750 | 800 |

Deviating scales or hardness can be ordered on custom request.

* Hardness value is outside the scope of the ISO/ASTM standards due to indentations smaller than 0,020mm
 ** Scales are outside the scope of accreditation.

CONVENIENT PACKAGING



BRINELL SCALES

UPI Brinell hardness calibration blocks are calibrated & DUAL-certified by UPI Laboratories traceable to National/International standards according to ISO 6506/3 & ASTM-E10 A4.



ROUND (dia. 90mm X 16mm thickness)

All mentioned hardness values are nominal, the actual calibrated values may vary.

| NAV ID | DESCRIPTION | | | | | | | | | | | | | | | | |
|-------------|-------------|-----|-----|------|------|------|------|------|------|------|------|------|------|------|------|--|--|
| HBW 10/3000 | | 70* | 100 | 150 | 170 | 200 | 250 | 300 | 350 | 400 | 450 | 500 | 550 | 600 | 650 | | |
| HBW 10/1500 | | 70 | 100 | 150 | 170 | 200 | 250 | 300 | 350* | 400* | 450* | 500* | 550* | 600* | 650* | | |
| HBW 10/1000 | | 70 | 100 | 150 | 170 | 200 | 250* | 300* | 350* | 400* | 450* | 500* | 550* | 600* | 650* | | |
| HBW 10/500 | 40 | 70 | 100 | 150* | 170* | 200* | 250* | 300* | 350* | 400* | 450* | 500* | 550* | 600* | 650* | | |
| HBW 5/750 | | 70* | 100 | 150 | 170 | 200 | 250 | 300 | 350 | 400 | 450 | 500 | 550 | 600 | 650 | | |
| HBW 5/250 | | 70 | 100 | 150 | 170 | 200 | 250* | 300* | 350* | 400* | 450* | 500* | 550* | 600* | 650* | | |
| HBW 5/125 | 40 | 70 | 100 | 150* | 170* | 200* | 250* | 300* | 350* | 400* | 450* | 500* | 550* | 600* | 650* | | |

Deviating scales or hardness can be ordered on custom request.
 Blocks can be supplied with NADCAP compliant grid.

* Hardness value is outside the scope of the ISO/ASTM standards

ROUND (dia. 60mm X 10mm thickness)

All mentioned hardness values are nominal, the actual calibrated values may vary.

| NAV ID | DESCRIPTION | | | | | | | | | | | | | | | | |
|---------------|-------------|-----|-----|------|------|------|------|------|------|------|------|------|------|------|------|--|--|
| HBW 2.5/187.5 | 40* | 70* | 100 | 150 | 170 | 200 | 250 | 300 | 350 | 400 | 450 | 500 | 550 | 600 | 650 | | |
| HBW 2.5/62.5 | 40 | 70 | 100 | 150 | 170 | 200 | 250* | 300* | 350* | 400* | 450* | 500* | 550* | 600* | 650* | | |
| HBW 2.5/31.25 | 40 | 70 | 100 | 150* | 170* | 200* | 250* | 300* | 350* | 400* | 450* | 500* | 550* | 600* | 650* | | |
| HBW 1/30 | 40* | 70* | 100 | 150 | 170 | 200 | 250 | 300 | 350 | 400 | 450 | 500 | 550 | 600 | 650 | | |
| HBW 1/10 | 40 | 70 | 100 | 150 | 170 | 200 | 250* | 300* | 350* | 400* | 450* | 500* | 550* | 600* | 650* | | |
| HBW 1/5 | 40 | 70 | 100 | 150* | 170* | 200* | 250* | 300* | 350* | 400* | 450* | 500* | 550* | 600* | 650* | | |

Deviating scales or hardness can be ordered on custom request.
 Blocks can be supplied with NADCAP compliant grid.

* Hardness value is outside the scope of the ISO/ASTM standards



INDENTERS

ROCKWELL INDENTERS

ROCKWELL DIAMOND & BALL INDENTERS

UPI Rockwell Indenters are calibrated & DUAL-certified by UPI Laboratories traceable to National/International standards according to ISO 6508/2 & ASTM-E18 A3.



| NAV ID | | DESCRIPTION |
|----------|--|--|
| UPI/6003 | | Rockwell diamond indenter ϕ 3mm, acc. to ISO 6508/2 & ASTM-E18 A3 |
| UPI/6004 | | Rockwell diamond indenter ϕ 3mm, L=12mm, acc. to ISO 6508/2 & ASTM-E18 A3 |
| UPI/6005 | | Rockwell diamond indenter ϕ 6.35mm, acc. to ISO 6508/2 & ASTM-E18 A3 |
| UPI/7503 | | 1/16" Embedded carbide ball indenter ϕ 3mm, with 1 ball, acc. to ISO 6508/2 & ASTM-E18 A3 |
| UPI/7603 | | 1/8" Embedded carbide ball indenter ϕ 3mm, with 1 ball, acc. to ISO 6508/2 & ASTM-E18 A3 |
| UPI/7703 | | 1/4" Embedded carbide ball indenter ϕ 3mm, with 1 ball, acc. to ASTM-E18 A3 |
| UPI/7506 | | 1/16" Carbide ball indenter ϕ 6.35mm, with 1 ball, acc. to ISO 6508/2 & ASTM-E18 A3 |
| UPI/7606 | | 1/8" Carbide ball indenter ϕ 6.35mm, with 1 ball, acc. to ISO 6508/2 & ASTM-E18 A3 |
| UPI/7706 | | 1/4" Carbide ball indenter ϕ 6.35mm, with 1 ball, acc. to ASTM-E18 A3 |
| UPI/7806 | | 1/2" Carbide ball indenter ϕ 6.35mm, with 1 ball, acc. to ASTM-E18 A3 |
| UPI/7808 | | 1/2" Embedded carbide ball indenter ϕ 3mm, with 1 ball, acc. to ASTM-E18 A3 |
| UPI/2507 | | 1/16" Carbide ball, for Rockwell ball indenter, acc. to ISO 6508/2 & ASTM-E18 A3 |
| UPI/2509 | | 1/8" Carbide ball, for Rockwell ball indenter, acc. to ISO 6508/2 & ASTM-E18 A3 |
| UPI/2514 | | 1/4" Carbide ball, for Rockwell ball indenter, acc. to ASTM-E18 A3 |
| UPI/2519 | | 1/2" Carbide ball, for Rockwell ball indenter, acc. to ASTM-E18 A3 |

BRINELL INDENTERS

VICKERS & KNOOP INDENTERS

BRINELL BALL INDENTERS

UPI Brinell Indenters are calibrated & DUAL-certified by UPI Laboratories traceable to National/International standards according to ISO 6506/2 & ASTM-E10 A3.



MACRO & MICRO VICKERS INDENTERS

UPI (Micro) Vickers Indenters are calibrated & DUAL-certified by UPI Laboratories traceable to National/International standards according to ISO 6507/2 & ASTM-E92 A3.

KNOOP INDENTERS

UPI Knoop Indenters are calibrated & DUAL-certified by UPI Laboratories traceable to National/International standards according to ISO 4545/2 & ASTM-E92 A3.



| NAV ID | | DESCRIPTION |
|----------|--|--|
| UPI/8010 | | Vickers indenter ø6.35mm, acc. to ISO 6507/2 & ASTM-E92 A3 |
| UPI/8105 | | Vickers indenter ø3mm, acc. to ISO 6507/2 & ASTM-E92 A3 |

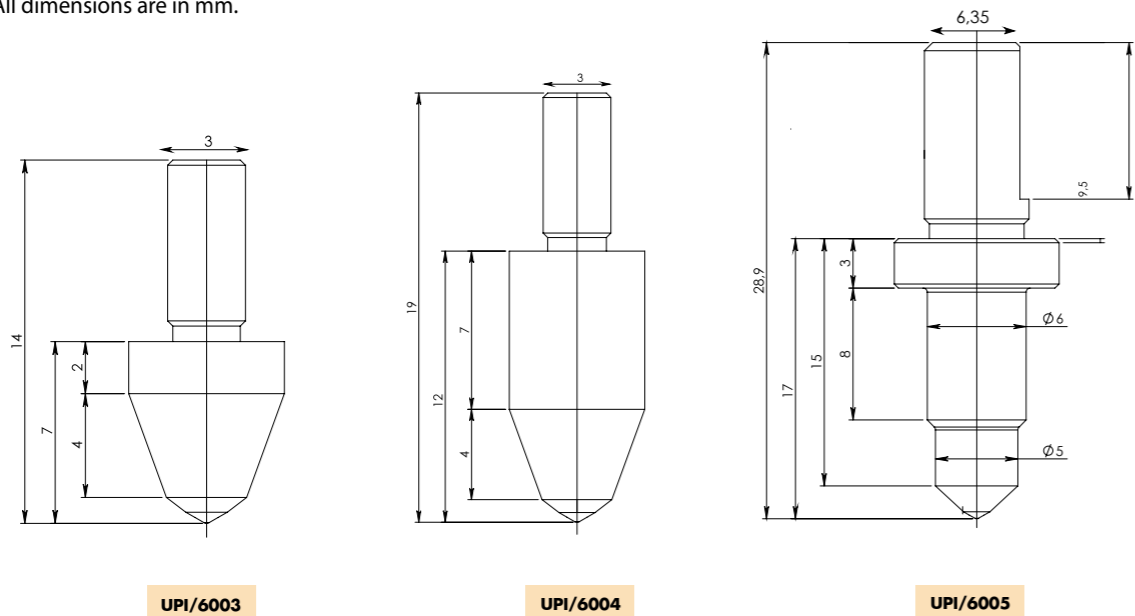
| NAV ID | | DESCRIPTION |
|----------|--|---|
| UPI/8205 | | Knoop indenter ø3mm, acc. to ISO 4545/2 & ASTM-E92 A3 |
| UPI/8220 | | Knoop indenter ø6.35mm, acc. to ISO 4545/2 & ASTM-E92 A3 |
| UPI/8221 | | Knoop indenter ø6.35mm, acc. to ISO 4545/2 & ASTM-E92 A3 Indenter is rotated 90° |

∅ = shaft diameter for machine mounting.

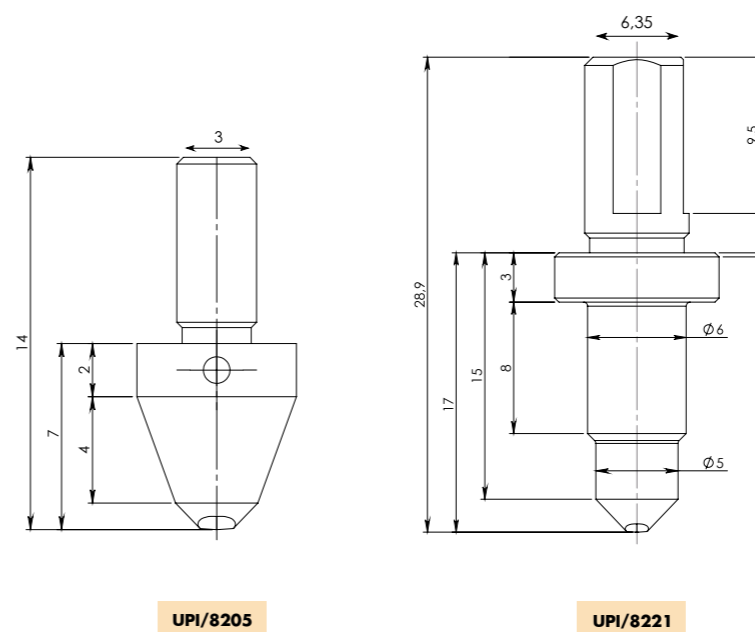
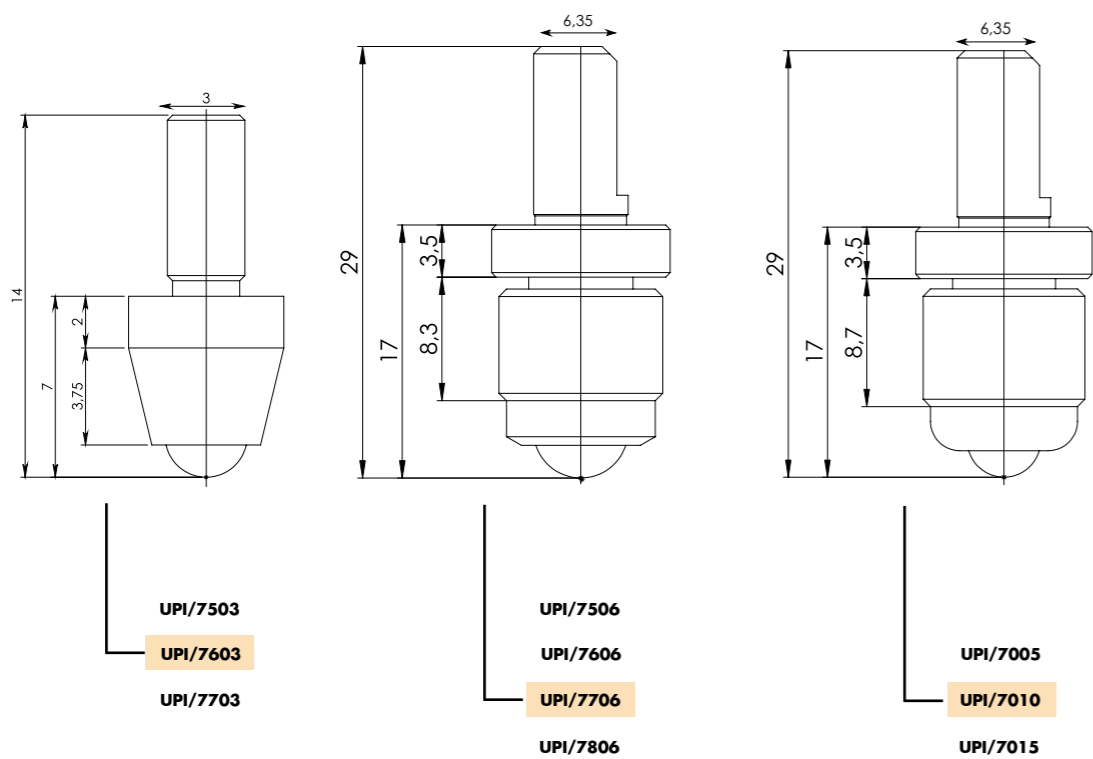
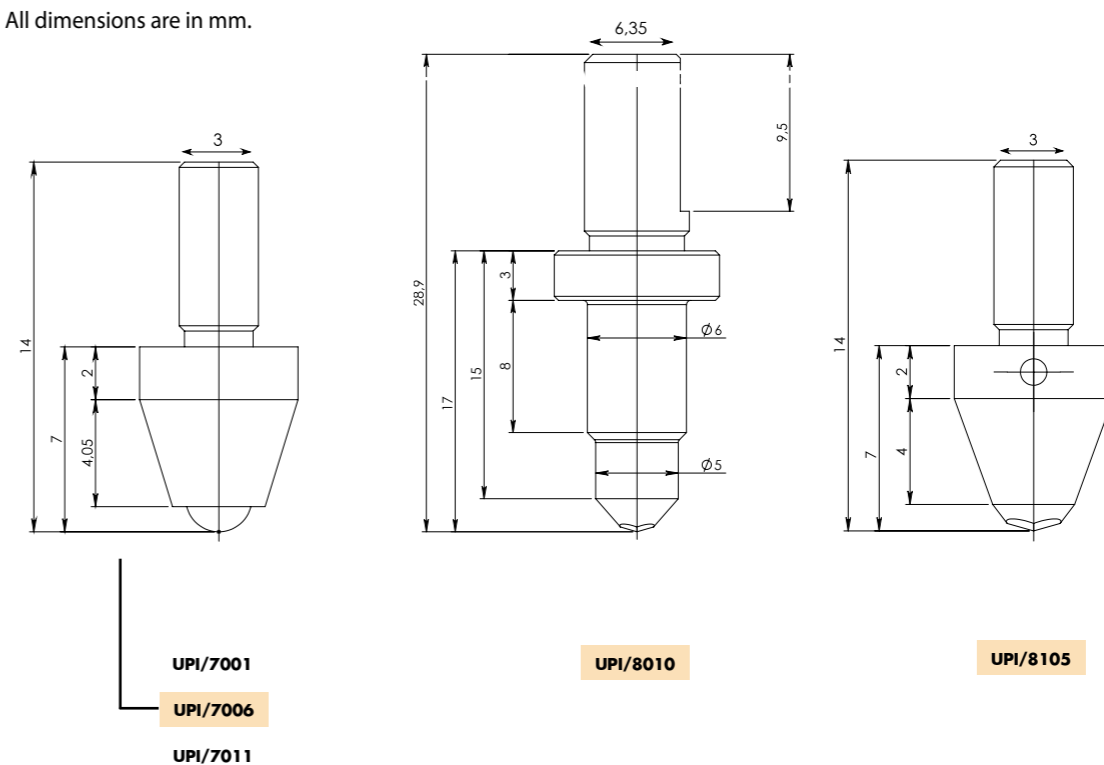


| NAV ID | | DESCRIPTION |
|----------|--|--|
| UPI/7001 | | 1mm Embedded carbide ball indenter ø3mm, acc. to ISO 6506/2 & ASTM-E10 A3 |
| UPI/7006 | | 2.5mm Embedded carbide ball indenter ø3mm, acc. to ISO 6506/2 & ASTM-E10 A3 |
| UPI/7011 | | 5mm Embedded carbide ball indenter ø3mm, acc. to ISO 6506/2 & ASTM-E10 A3 |
| UPI/7000 | | 1mm Carbide ball indenter ø6.35mm, acc. to ISO 6506/2 & ASTM-E10 A3 |
| UPI/7005 | | 2.5mm Carbide ball indenter ø6.35mm, acc. to ISO 6506/2 & ASTM-E10 A3 |
| UPI/7010 | | 5mm Carbide ball indenter ø6.35mm, acc. to ISO 6506/2 & ASTM-E10 A3 |
| UPI/7015 | | 10mm Carbide ball indenter ø6.35mm, acc. to ISO 6506/2 & ASTM-E10 A3 |
| UPI/2005 | | 1.0mm Carbide ball, for ø6.35mm indenters, acc. to ISO 6506/2 & ASTM-E10 A3 |
| UPI/2010 | | 2.5mm Carbide ball, for ø6.35mm indenters, acc. to ISO 6506/2 & ASTM-E10 A3 |
| UPI/2015 | | 5.0mm Carbide ball, for ø6.35mm indenters, acc. to ISO 6506/2 & ASTM-E10 A3 |
| UPI/2020 | | 10.0mm Carbide ball, for ø6.35mm indenters, acc. to ISO 6506/2 & ASTM-E10 A3 |

All dimensions are in mm.



All dimensions are in mm.



GENERAL SALES & SUPPLY CONDITIONS

PRICES

Are in EURO, excluding VAT, EX WORKS Maastricht, The Netherlands.
Subject to changes without prior notice.
Check our order confirmation for actual prices.

Our order confirmations are binding.
Quotes for transportation or transportation charges on account or invoice are for administration purpose only, the delivery condition remains EX WORKS.

ORDERS

Confirmed orders can only be cancelled after our written consent.

DELIVERY TIME

All deliveries are from stock Maastricht. In those cases where a delivery time is indicated, these indications are for reference only and can change without prior notice.
It is explicitly stated that UPI Laboratories Europe BV accepts no liability nor penalties in case of late deliveries.

DELIVERY

Special instructions are only accepted if stated in writing on your order and are subject to the approval of UPI Laboratories Europe BV and reconfirmed in writing. All shipments travel for the full risk of Buyer regardless of the party that has instructed the forwarder.
UPI Laboratories Europe BV is explicitly not liable for loss or damage of any goods.

ADDITIONAL CHARGES

The following charges apply for orders less than net:
Euro 250,- costs Euro 25,-
Euro 100,- costs Euro 30,-
Euro 50,- costs Euro 35,-

SHIPMENTS

We reserve the right to send partial or combined shipments for each individual order.

PAYMENTS

Unless otherwise agreed, payments to be made in advance.
A discount of 2% applies for advance payments. In case of an agreed open account, payments within 30 days of invoice date unless agreed otherwise in writing.
Late payments are subjected to an interest rate 3% a month. Goods delivered remain the unconditional property of UPI Laboratories Europe BV until they are fully paid for.

In addition to the general terms of sales & supply conditions applicable to commercial transactions, concerning the delivery of certified indenters and reference hardness blocks, as per the scope of UPI Laboratories the following applies:

When determining the approval of certified indenters, no consideration is given to measurement uncertainty. Regarding the recalibration period, a recommendation is provided by the respective indenters, as advised by the relevant standards for indenters. Concerning the validity of the calibrated reference hardness block, a recommendation is provided in the calibration certificate, as advised by the applicable standards for reference hardness blocks. When determining the approval of reference hardness blocks, no consideration is given to measurement uncertainty regarding the general requirements. The standards applied in the certificates are recorded, including the year. If there is a change in standards, it is implemented within six months of publication.

CONFIDENTIALITY:

Unless otherwise provided by law, the Contractor is obligated to maintain confidentiality regarding information obtained during the execution of the contract or of which they know or reasonably suspect that confidentiality is necessary. If, in the Contractor's opinion, misunderstandings among third parties are imminent or there is a risk to persons or public health based on the results of an investigation, this releases the Contractor from their obligation of confidentiality towards the involved individuals or relevant authorities. The Contractor shall inform the Client of such disclosure.



UPI Laboratories Europe BV

Borgharenweg 140
6222 AA Maastricht
The Netherlands

Phone : +31 43 4578101
E-mail : info@upi-laboratories.com